

GL-Racing – High quality 3 Pin bullet connector

Item No: GL-CR-20

Color: Black

Metal Polar: Brass with Gold Plate

RC: 15A

Plastic Material: LCP

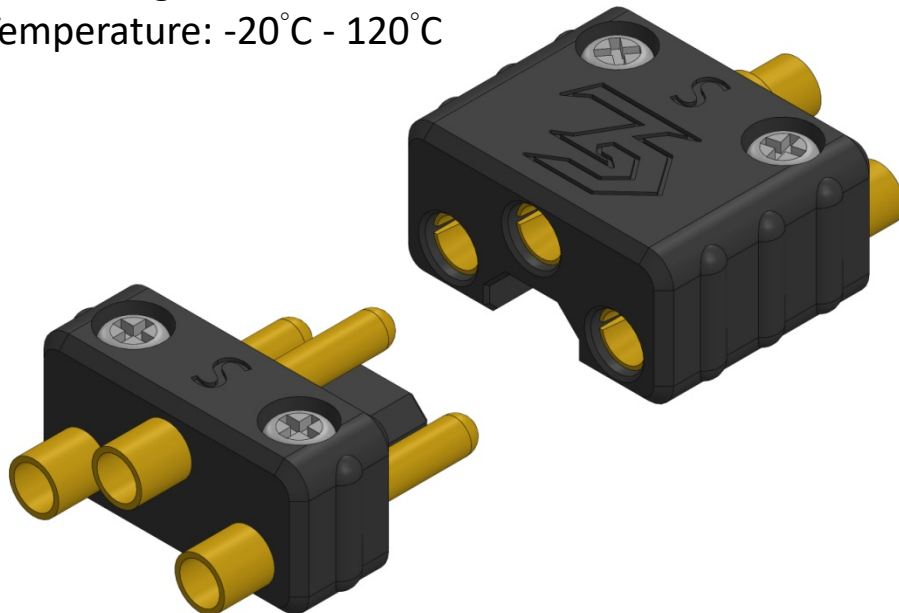
MC: 30A

FR Level: UL 94V-0

Cycle time: 3000

Cable Range: 19AWG – 24AWG

Temperature: -20°C - 120°C



Inside the packaging



Male x1



Female x1



Male Polar x3



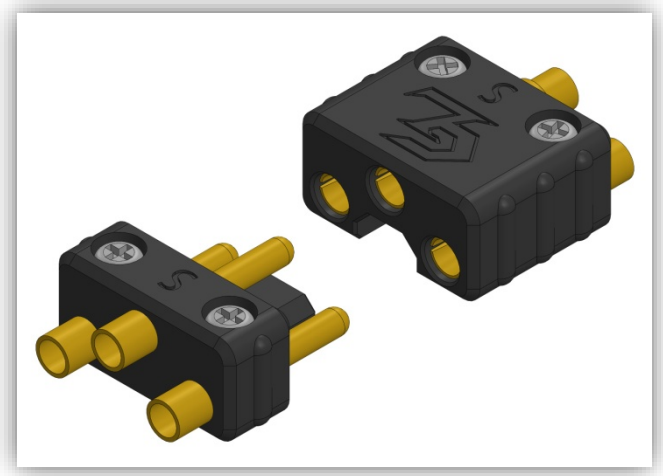
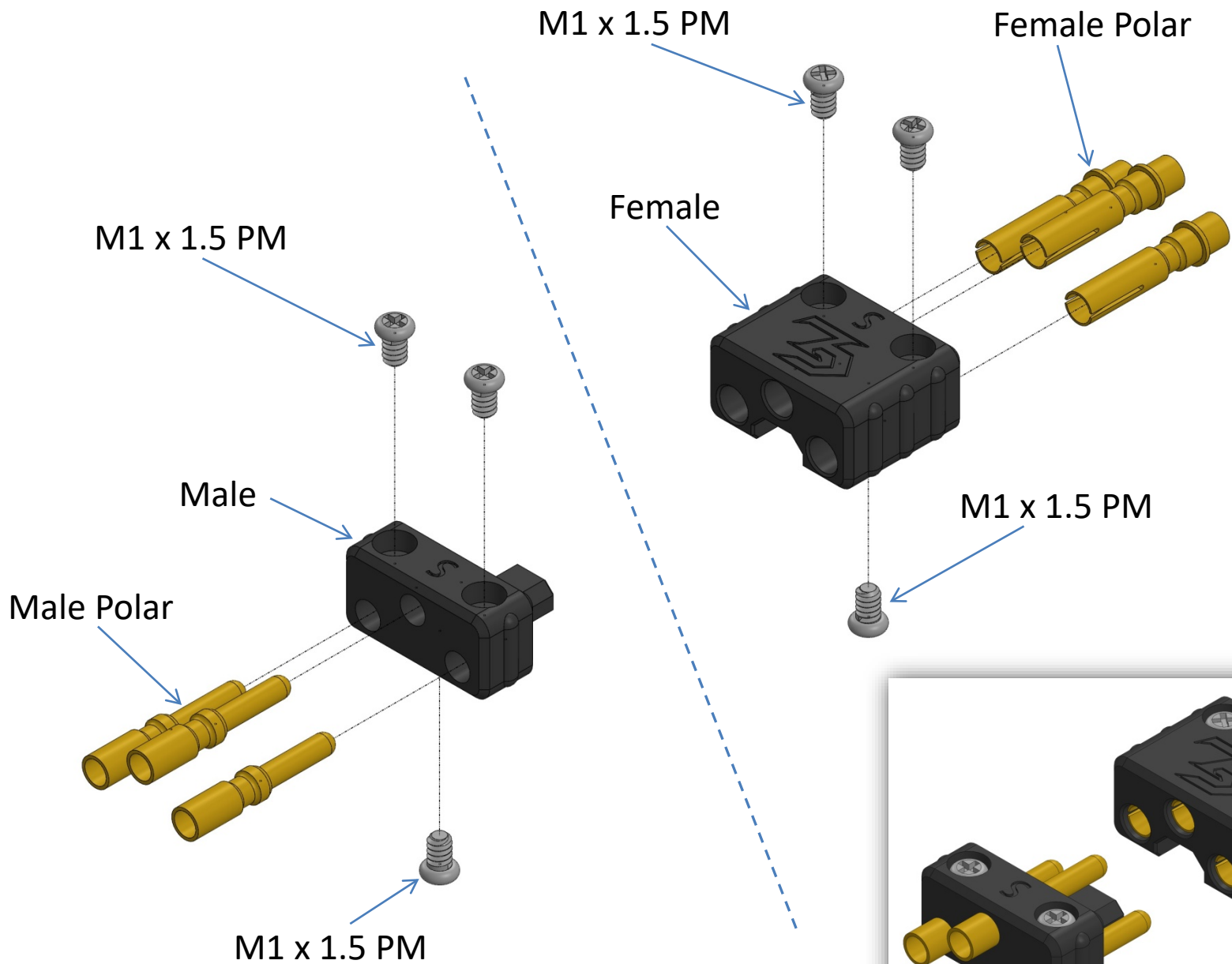
Female Polar x3

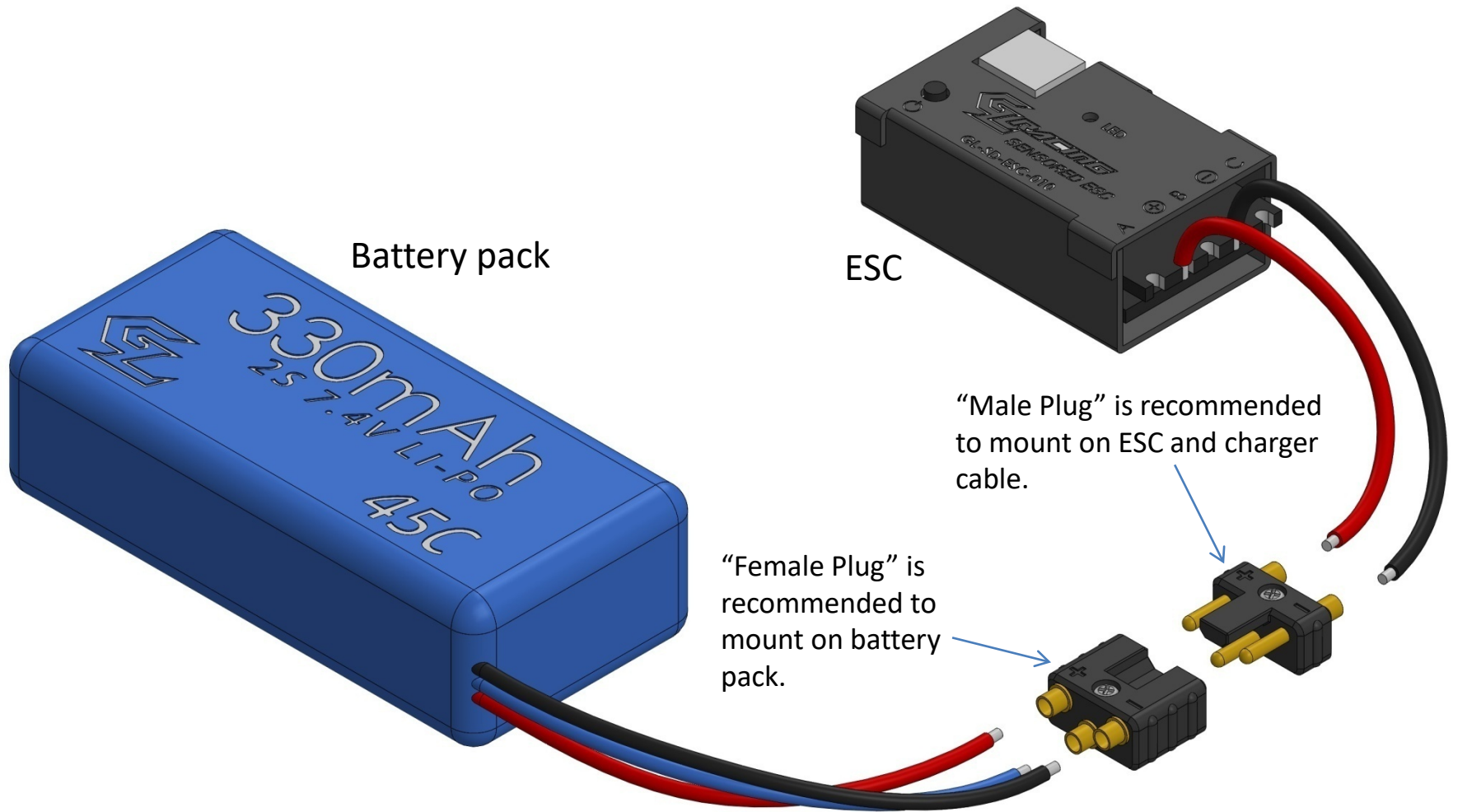


Heat Shrink Tubing
x6 Ø2.5 x 10mm



Phillips head
Screw x6
M1 x 1.5 PM





Notice: Please make sure the polar (+ red) and (– black) are matching with marking on plug when using as a power plug. Any wrong placement in either may cause damage or getting burn.